



# SURFACE SEAL SB

Thermoplastic Rubber | Liquid-Applied Roofing

over Structural Concrete

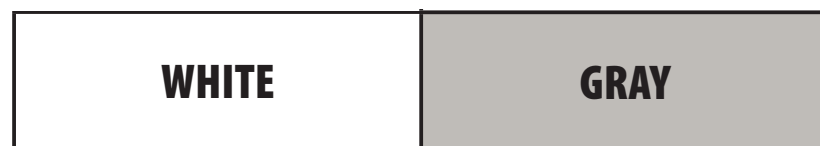


# GAF SURFACE SEAL SB

Thermoplastic Rubber | Liquid-Applied Roofing



STANDARD COLORS



- Solvent-based, cures to form a seamless rubber membrane
- Do NOT apply more than 1.5 gallons per 100 ft<sup>2</sup> in a single coat.
- APPLICATION SURFACE TEMPERATURE: 40°F - 100°F

Seamless, Applied Directly to Concrete



10-Year Rate	15-Year Rate	20-Year Rate
<b>3 Gal/Sq</b>	<b>4 Gal/Sq</b>	<b>5 Gal/Sq</b>
24 DFT <sup>2</sup> , mils	32 DFT <sup>2</sup> , mils	40 DFT <sup>2</sup> , mils
1.66 Sq per 5-gal pail	1.25 Sq per 5-gal pail	1 Sq per 5-gal pail

Unit Size	Color	Item #
5 gal. (18.93 L)	White	89SS920
55 gal. (208 L)	White	89SD920
5 gal. (18.93 L)	Light Gray	890815419
55 gal. (208 L)	Light Gray	89SW419

# GAF SURFACE SEAL SB

Thermoplastic Rubber | Liquid-Applied Roofing

Miami-Dade NOA# 23-1130.05 - page 13 of 14

## PRIME

2.50 gal/SQ - Smooth Surface  
12.5 SQ per 5-gal pail

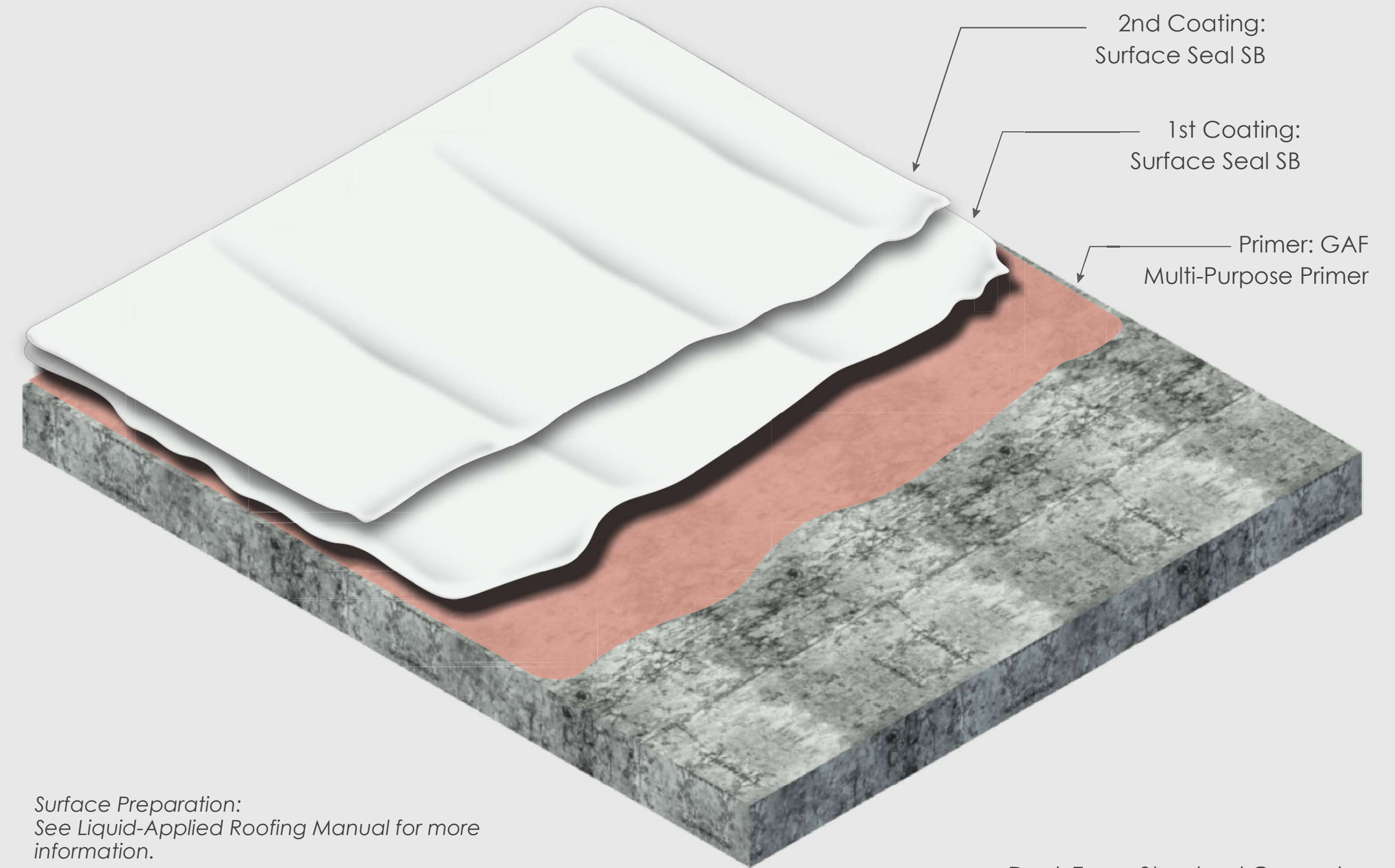


Coverage rates are estimates only. Actual usage will vary by surface and conditions. Refer Refer to Technical Data Sheet for product specific application and surface temperature restrictions.

## APPLY



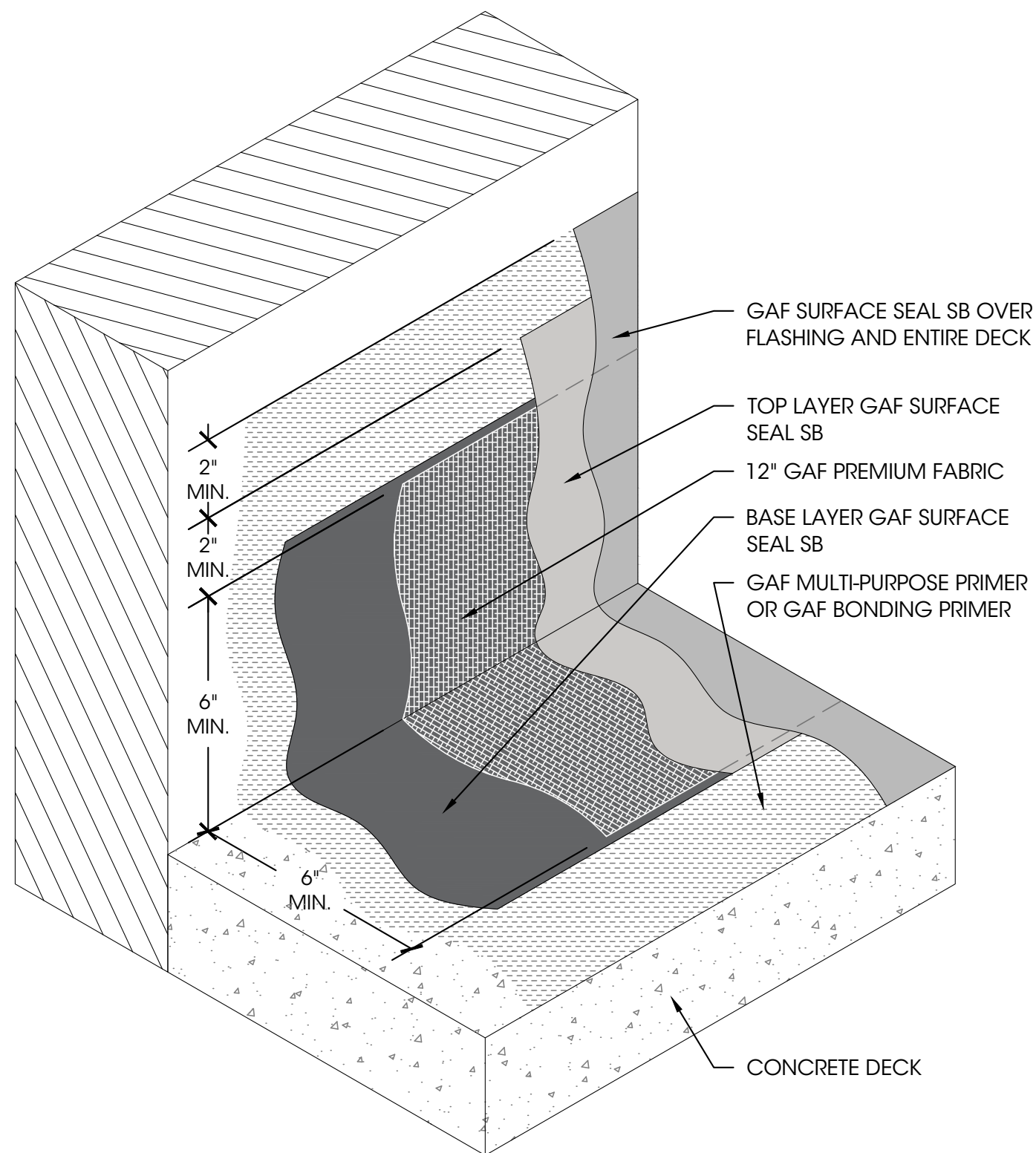
### Surface Seal SB over Structural Concrete



Surface Preparation:  
See Liquid-Applied Roofing Manual for more information.

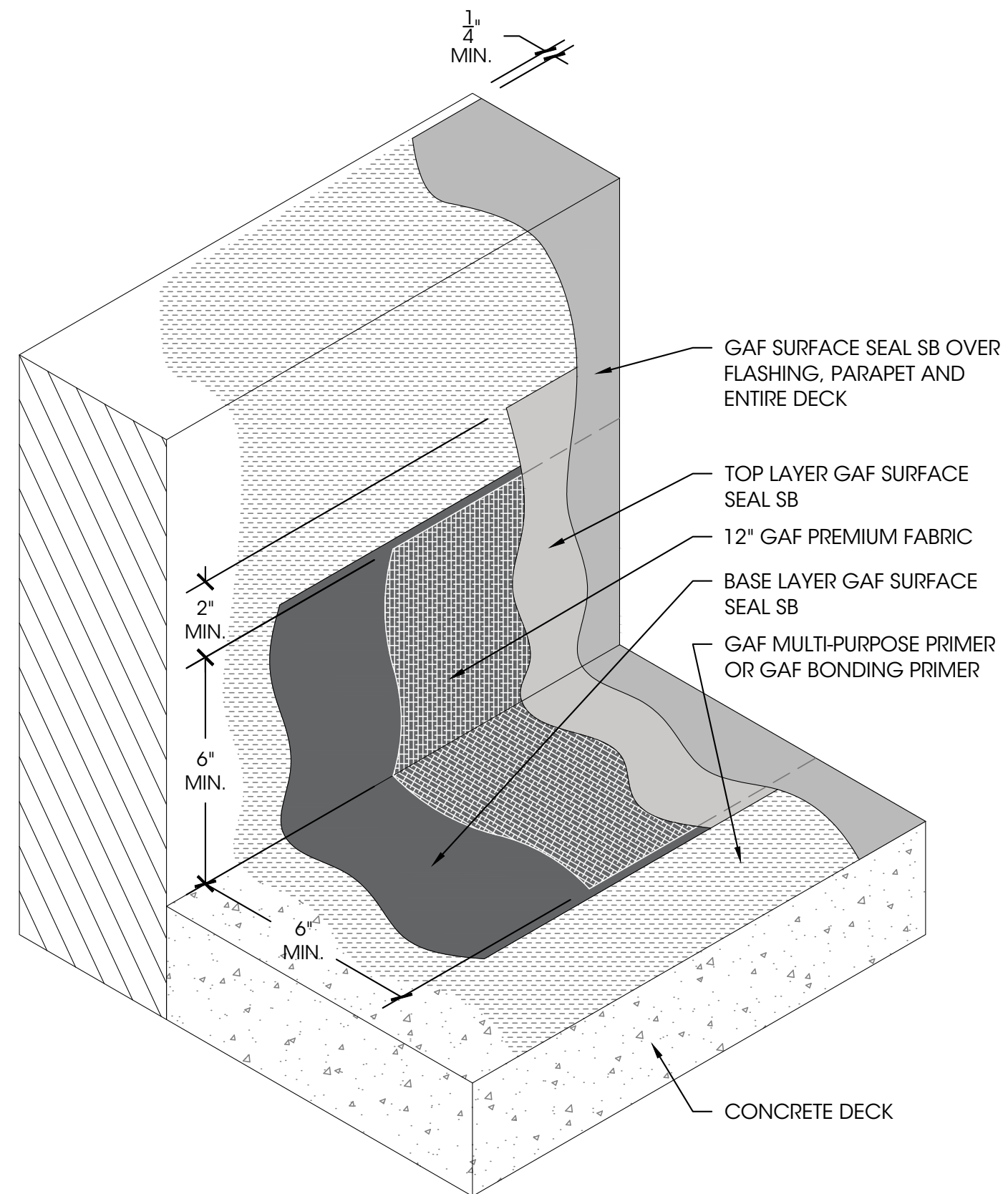
Deck Type: Structural Concrete

10-Year Rate	15-Year Rate	20-Year Rate
<b>3</b> Gal/Sq	<b>4</b> Gal/Sq	<b>5</b> Gal/Sq
24 DFT <sup>2</sup> , mils	32 DFT <sup>2</sup> , mils	40 DFT <sup>2</sup> , mils
1.66 Sq per 5-gal pail	1.25 Sq per 5-gal pail	1 Sq per 5-gal pail



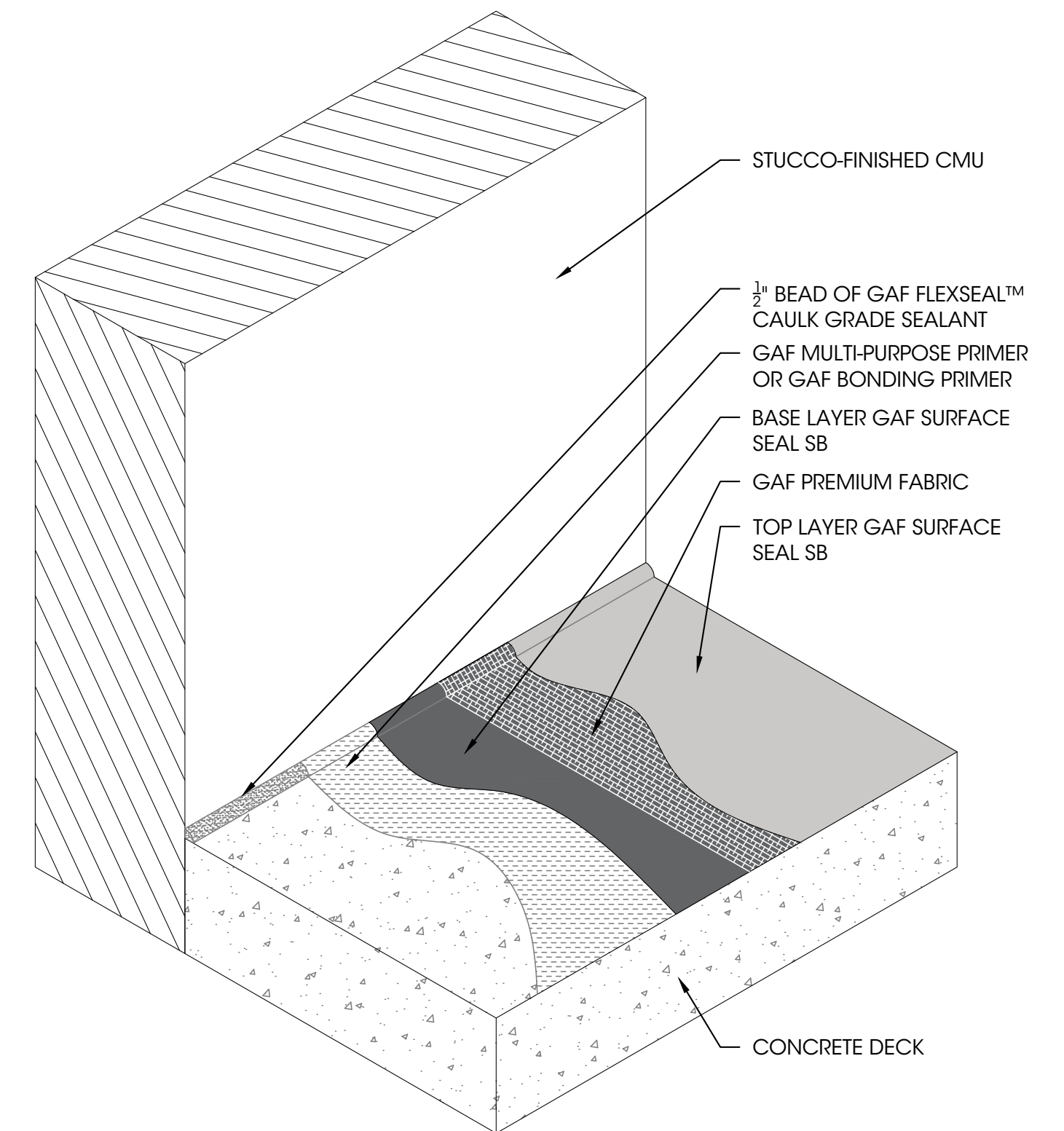
NOTES:  
1. REQUIREMENTS AND RECOMMENDATIONS OUTLINED IN THE APPLICABLE GAF MANUAL OR GUIDE SHALL APPLY IN ADDITION TO THE DRAWING ABOVE.

**1** WALL FLASHING NOT TO SCALE



NOTES:  
1. REQUIREMENTS AND RECOMMENDATIONS OUTLINED IN THE APPLICABLE GAF MANUAL OR GUIDE SHALL APPLY IN ADDITION TO THE DRAWING ABOVE.

**2** WALL FLASHING WITH PARAPET CAP NOT TO SCALE



NOTES:  
1. REQUIREMENTS AND RECOMMENDATIONS OUTLINED IN THE APPLICABLE GAF MANUAL OR GUIDE SHALL APPLY IN ADDITION TO THE DRAWING ABOVE.

**3** WALL FLASHING AT STUCCO WALL NOT TO SCALE



**Field Services**

All information contained within this document is the property of GAF and applies only to the specified project and/or detail. This document may not be distributed, modified, or reproduced in any format, written, verbal or otherwise, without prior written approval from GAF.

**Legend:**  
Primer



**Product:**  
GAF Surface Seal SB

**Drawn By:**  
Brandon Walsh

**Issue Date:**  
2/7/2025

**Detail No.:**  
CD-25

**02-055**

Coverage rates are estimates only. Actual usage will vary by surface and conditions.

# PRIME

ENHANCED ADHESION



## GAF Multi-Purpose Primer

- 891435000 - GAF Multi-Purpose Primer Part A - 4.5 GAL
- 891436000 - GAF Multi-Purpose Primer Part B - 0.5 GAL
- 891433000 - GAF Multi-Purpose Primer Part A - 1 GAL
- 891434000 - GAF Multi-Purpose Primer Part B - 1 PINT

Priming of substrate is recommended and may be required. See GAF Liquid-Applied Roofing Manual at [gaf.com](http://gaf.com).

# FLASH

Prevent Leaks



## FLASHING:

- 89SS920 - Surface Seal SB 5-GAL - White
- 8962920WP - FlexSeal Caulk Grade White 10oz Tube 20/box

## REINFORCING FABRIC

- 890063000 - 12" x 300' Premium Fabric



# APPLY



## Surface Seal SB (Solvent-Based) THERMOPLASTIC RUBBER

- 89SS920 - Surface Seal SB 5-GAL - White
- 89SD920 - Surface Seal SB 54-GAL - White
- 890815419 - Surface Seal SB 5-GAL - Light Gray



# Liquid-Applied Roofing

## Packaging and Coverage Rates

Based on minimum installation guidelines, reference GAF Liquid-Applied manual for coverage rate guidance

PRODUCTS	UNIT'S PER PALLET	SQ'S PER PALLET	SQ'S PER UNIT
<b>Surface Seal SB 5-gal</b>	<b>36 Pails/ pallet</b>	<b>60 SQ / Pallet</b>	<b>1.6 SQ / 5-gal pail</b>
FlexSeal™ Sealant 5-gal	36 Pails/ pallet	5,400 LN. FT / Pallet (with fabric)	150 LN.FT / 5-gal pail (with fabric)
FlexSeal™ Caulk Grade 10oz - 20 Tubes/box	60 Box/ pallet	N/A	N/A
Premium Fabric 12"	25 Rolls/ pallet	7,500 LN.FT / Pallet	300 LN.FT / roll
GAF Multi-Purpose Primer A 1-gal	180 Pails/ pallet	360 SQ / Pallet	2 SQ / 1-gal pail
GAF Multi-Purpose Primer B 1-pint	-	-	-
GAF Multi-Purpose Primer A 4.5-gal	36 Pails/ pallet	360 SQ / Pallet	10 SQ / 5-gal pail
GAF Multi-Purpose Primer B 0.5-gal	180 Pails/ pallet	-	-

The amount of coating required and number of coats is determined by duration and warranty specified. Coverage also varies with the specific substrate being coated; consult Technical Sales Representative for coverage rate guidance.

GAF and its representatives can not be responsible for variations in material needed and material costs.

**Existing Roof System:** — Class A, B or C roof covering system to retain the existing Classification covered with:

**Membrane:** — "EverGuard® TPO FB Ultra" 60-mil to 80-mil or "EverGuard Extreme® TPO FB Ultra" 60-mil to 80-mil, fully adhered with hot roofing asphalt or mechanically fastened.

## FLUID APPLIED COATING SYSTEMS

### Class A

1. **Deck:** NC

**Incline:** Unlimited

**Base Coat:** — "TOPCOAT® Membrane Coating", "United Coatings™ Roof Mate™ TCM Roof Coating", "TOPCOAT® Membrane WOB" or "United Coatings™ Roof Mate™ WOB Coating" applied at a rate of 1 to 1.5-gal./100-ft.<sup>2</sup>.

**Intermediate Coat (Optional):** — TOPCOAT® Membrane Coating", "United Coatings™ Roof Mate™ TCM Roof Coating", "TOPCOAT® Membrane WOB" or "United Coatings™ Roof Mate™ WOB Coating" applied at a rate of 1 to 1.5-gal./100-ft.<sup>2</sup>.

**Top Coat:** — "TOPCOAT® Membrane Coating", "United Coatings™ Roof Mate™ TCM Roof Coating", "TOPCOAT® Membrane WOB" or "United Coatings™ Roof Mate™ WOB Coating" applied at a rate of 1 to 1.5-gal./100-ft.<sup>2</sup>.

2. **Deck:** NC

**Incline:** Unlimited

**Coating:** — "TOPCOAT® Membrane Coating", "United Coatings™ Roof Mate™ TCM Roof Coating", "TOPCOAT® Membrane WOB" or "United Coatings™ Roof Mate™ WOB Coating" applied at a rate of 2 to 3-gal./100-ft.<sup>2</sup>.

3. **Deck:** NC

**Incline:** 3

**Primer (Optional):** — "UniTile LV Sealer" (Not UL Classified) applied at a rate of 1/4 gal./100-ft.<sup>2</sup>.

**Base Coat:** — "TOPCOAT® Surface Seal SB Coating" or "United Coatings™ Surface Seal SB Roof Coating" applied at a rate of 1 to 1-1/2 gal./100-ft.<sup>2</sup>.

**Mid Coat (Optional):** — One or two applications "TOPCOAT® Surface Seal SB Coating" or "United Coatings™ Surface Seal SB Roof Coating" applied at a rate of 1 to 1-1/4 gal./100-ft.<sup>2</sup>.

**Top Coat:** — "TOPCOAT® Surface Seal SB Coating" or "United Coatings™ Surface Seal SB Roof Coating" applied at a rate of 1 to 1-1/4 gal./100-ft.<sup>2</sup>.

Last Updated on 2020-07-09

The appearance of a company's name or product in this database does not in itself assure that products so identified have been manufactured under UL's Follow-Up Service. Only those products bearing the UL Mark should be considered to be Certified and covered under UL's Follow-Up Service. Always look for the Mark on the product.

UL permits the reproduction of the material contained in the Online Certification Directory subject to the following conditions: 1. The Guide Information, Assemblies, Constructions, Designs, Systems, and/or Certifications (files) must be presented in their entirety and in a non-misleading manner, without any manipulation of the data (or drawings). 2. The statement "Reprinted from the Online Certifications Directory with permission from UL" must appear adjacent to the extracted material. In addition, the reprinted material must include a copyright notice in the following format: "© 2020 UL LLC"

**Membrane Type:** Liquid Applied Membrane  
**Deck Type 3:** Concrete Decks, Non-Insulated  
**Deck Description:** 2500 psi structural concrete or concrete plank  
**System Type F(3):** Fully adhered liquid applied system.

### All General Limitations apply.

GAF products shall be installed in accordance with the manufacturer's specifications. The following are minimum installation guidelines. Consult the manufacturer's specifications or Technical Representative for specific/complete installation instructions.

**Substrate Preparation:** All surfaces must be dry and free of depressions, voids protrusions; clean and free of any non-compatible curing compounds, foam release agents and other surface contaminants.

**Primer (optional):** Apply one coat of GAF Bonding Primer at 0.20-0.25 gal/100ft<sup>2</sup>.

**Base Coat:** Apply one coat of GAF Surface Seal SB at a rate of 1 to 1.25 gallon per square per coat. Allow 24 hours drying time prior to allowing foot traffic or inspection of roof surface.

**Finish Coat(s):** Apply two or more coats of GAF Surface Seal SB at a rate of 1 to 1.25 gallon per square per coat. Allow 24 hours drying time prior to allowing foot traffic or inspection of roof surface.

**Maximum Design Pressure:** -502.5 psf. (See General Limitation #9)

### MANUFACTURER'S REQUIREMENTS:

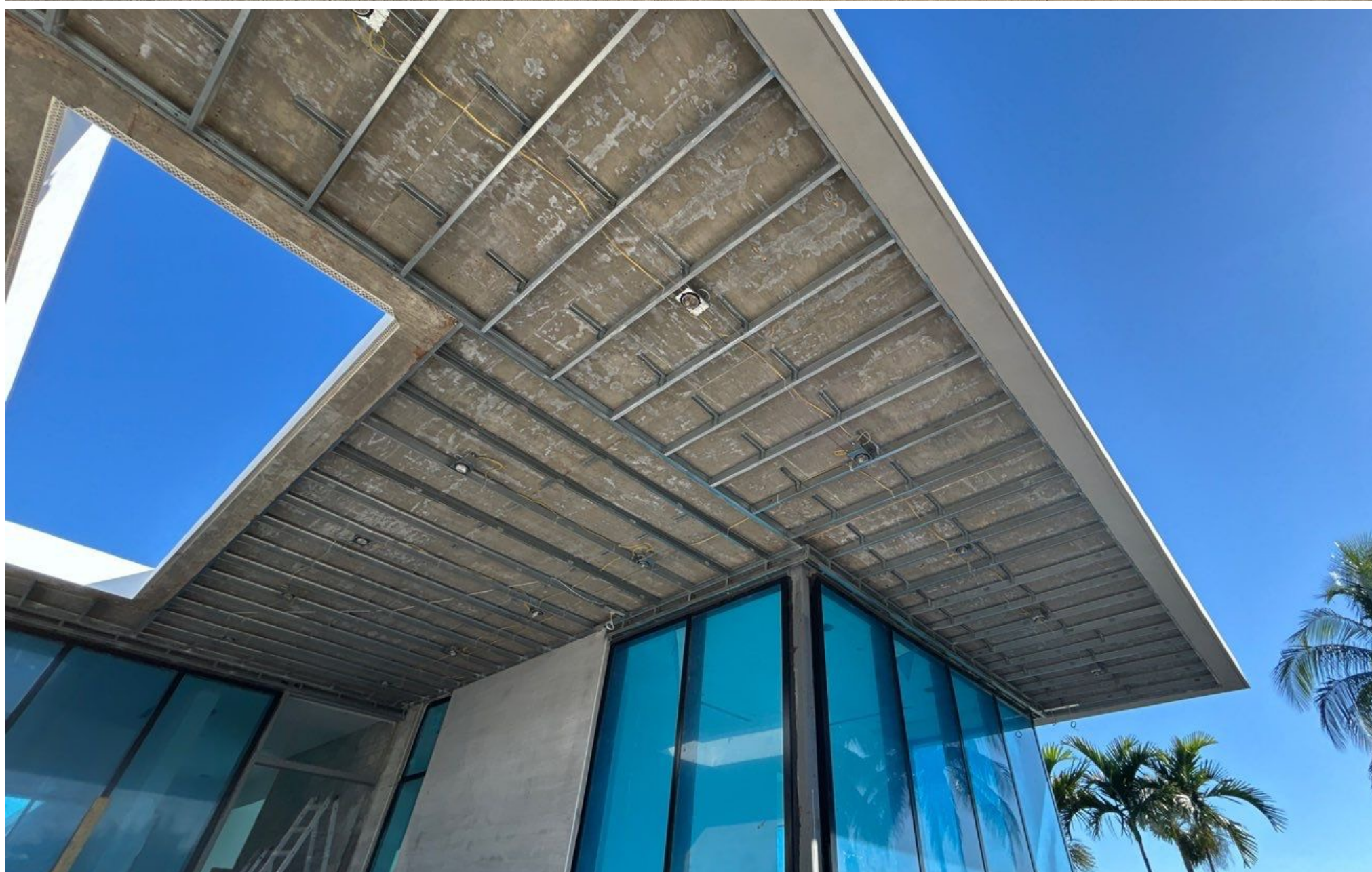
- Contractor must be a GAF HydroStop® "Approved Applicator", trained and familiar with the details and specifications published by the manufacturer. Proof of this qualification shall be provided in written form from the manufacturer.
- Refer to GAF's published installation instructions for detailed installation requirements and recommendations.

Miami-Dade NOA# 23-1130.05 - page 13 of 14



NOA No.: 23-0502.01  
 Expiration Date: 06/22/28  
 Approval Date: 08/03/23  
 Page 13 of 14





This isn't Paint - It's Roofing



# LIQUID-APPLIED

ROOFING & WATERPROOFING

# Daniel Peña

GET PEACE OF MIND WITH A GAF PRO

305.812.6865

daniel.pena@gaf.com



Photo taken at #WALLOFWIND

There's a liquid solution for your roof - talk to GAF first